

South Suburban Fire Investigation Task Force  
Policy and Procedure for Task Force Response

The purpose of the South Suburban Fire Investigation Task Force is to augment the stricken agency with additional man power or equipment to assist in determining origin and cause of a fire or explosion.

The stricken agency must provide the task force incident commander with a representative from the stricken agencies fire and law enforcement division to act as an investigative liaison between the task force and incident command until the incident has been terminated. The stricken agency must be a participating MABAS Division with a signed mutual aid agreement authorizing assistance/authority to function within that jurisdiction as stipulated in the MABAS, ILEAS or other inter-government mutual agreement with the fire service or law enforcement agency requesting assistance.

The fire investigation task force is not responsible to assume jurisdictional authority over the incident; the task force is designed as a resource available to the stricken agency by providing man-power, equipment, and other designated resources throughout the investigation.

The following procedure will be effective January 31, 2008 for activation of the South Suburban Fire Investigation Task Force by a participating MABAS Division, Fire Department or Law Enforcement Agency.

Request from non participating agencies must be approved by Commander William Leddin or his assigned on call designee prior to activation.

**Guidelines Task Force Response**

1. Commercial structures having a value of \$250,000.00 or more.
2. School, Church, Municipal or Governmental building. (State supported property).
3. Multiple civilian fatalities (residential, non residential structures).
4. Death or Great Bodily harm to fire fighter(s), Paramedic(s) or Police Officer(s)
5. Multiple working fires in the same jurisdiction or MABAS Division.
6. High dollar fire or explosions having a loss in excess of \$250,000.00 or more.
7. Serial Arsons occurring in the same jurisdiction or area.

**Orland Central Dispatch will obtain & document all information regarding the request to include the following:**

1. Name of requesting agency (fire dept., police dept. etc).
2. Name, rank and contact number(s) of the person requesting.
3. Location of incident \_\_\_\_\_.
4. Location of the on scene Fire/Law Enforcement Incident Command.
5. Type of Incident – Structure fire, explosion, (fire/police/civilian death or great bodily injury).
6. Type of structure – (commercial, multi-family, industrial, church, federal, state or governmental structure).
7. Affected MABAS Division and Area Commander or MABAS Fire Investigation Advisor on scene.
8. Directions into the fire scene/incident command post.

Orland Central dispatch will notify Commander Leddin or his assigned designee of the request; in addition Orland Central Dispatch will notify Chief Joe Miller, Palos Park Police Dept; ATF and the State Fire Marshal of the Task Force request.

**State Fire Marshal IEMA Arson Hot Line 1- 800- 252- 2947      ATF Response Center 1- 888- 712 - 2400**

The Task Force Commander or his designee will respond to the scene and coordinate with the on scene stricken agency incident commander or MABAS division fire investigation advisor to determine the stricken agencies exact needs, man power and equipment requirements to conduct an origin and cause or criminal investigation.

**Task Force Commanders/Advisors (Cell phone, Nextel – direct connect or text messaging)**

- |                             |                            |
|-----------------------------|----------------------------|
| • Commander William Leddin  | Deputy Commander Konopek   |
| • Deputy Commander Cyborski | Deputy Commander A/C Rauch |
| • Deputy Commander Stratton | Deputy Commander Smith     |

**Upon the orders of the Task Force Commander/Advisor a second alarm assignment maybe be requested; the second alarm response maybe evaluated to a higher (specific level) to provide sufficient man-power and equipment to the scene. Orland Dispatch Center will notify and transmit the alarm request to all assigned Task Force MABAS Divisions on IFERN.**

South Suburban Fire Investigation Task Force  
Policy and Procedure for Task Force Response

**Second Alarm Fire Investigation Task Force Response**

- (1) Operations Officer – (Task Force Deputy Commander or designee)
- (1) Safety Officer – (Task Force Deputy Commander or designee)
- (1) Fire Investigation Van (MABAS 19 - Orland, East Joliet, Lockport, MABAS 24 Riverdale, MABAS 22, Crestwood MABAS 27 Matteson.
- (1) Incident Command Vehicle (ESDA – Mokena, Will County, Oak Forest)
- (2) Illinois State Certified Arson Investigators/Peace Officer – (Sworn by their agency as Full Time Sworn Arson Investigator/ Peace Officer).
- (4) Illinois State Certified Fire Investigators
- (1) K-9 Unit - ( C.C. Hills F.D, Joliet F.D, Plainfield F.D, State Fire Marshal)

**(No additional personnel are to be dispatched or respond to the scene once the assigned positions have been filled.)**

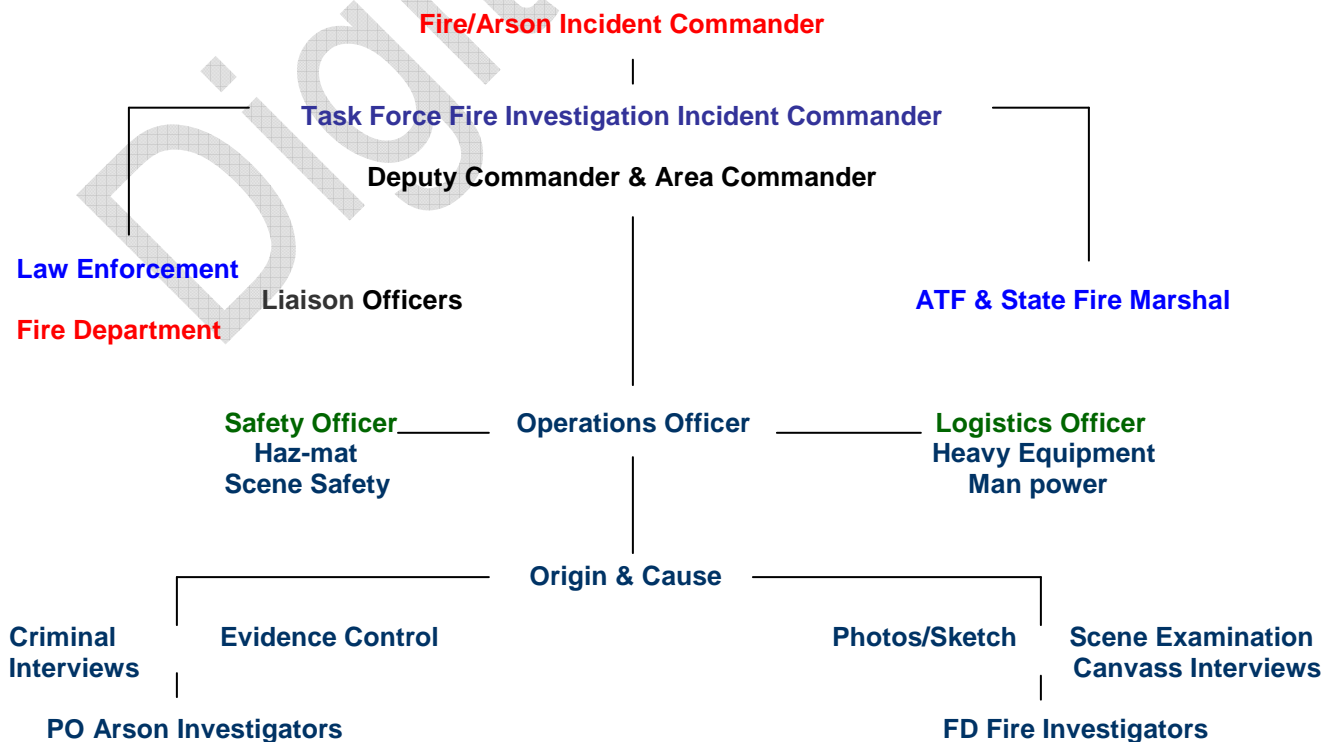
Orland Central will contact the appropriate MABAS Division(s) Coordinators/Advisors by IFERN of the second alarm assignment. Each MABAS Division Coordinator/Advisor will be responsible to notify that divisions respective investigators and provide Orland Central with a list of personnel and equipment available to respond; Orland Central will relay the information to the on scene task force incident commander of personnel /equipment availability.

Investigators assigned to the task force will respond to the scene in a department vehicle; notify Orland Central via IFERN when enroute and on scene; no emergency warning devices will be utilized when responding to the scene unless authorized by the jurisdiction having authority, Incident Commander or by the on scene MABAS or Task Force Fire Investigation Incident Commander assisting the stricken agency having jurisdiction over the incident. (Examples: the use of emergency warning devices may apply to the following circumstances; multiple fatalities, evidence maybe destroyed due to weather, fire suppression, etc.)

Orland Central will maintain a current list of available personnel and their certification rank (Arson or Fire Investigator) available to respond should additional man power or equipment be requested to the scene). **NO** Fire Investigation personnel will respond to the scene unless requested by the **(on scene Task Force Commander or authorized by the MABAS Incident Commander)**.

All assigned fire/arson investigation personnel will report to the task force operations officer upon arrival on scene for assignment, all responding task force members working on scene will be assigned a task force vest and ID tag. South Suburban Fire Investigation Task Force Personnel **(mandatory)** will wear the designated (ARSON TASK FORCE) Lime Green Vest and ID tag while on scene.

**TASK FORCE ON SCENE INCIDENT COMMAND STRUCTURE**



South Suburban Fire Investigation Task Force  
Policy and Procedure for Task Force Response

**Definitions/designations:**

**ATF & State Fire Marshal** – assisting Federal and State agencies involved with the criminal investigation related to origin and cause, follow-up investigation leading up to and including prosecution. ATF/ State Fire Marshal maybe assigned to assist as incident command, conduct interviews and interrogations or act in a supervisory role as related to various investigative duties throughout the investigation. The ATF or State Fire Marshal may assume jurisdiction authority over the incident as authorized by State or Federal Statute granting such authority to either the ATF or State Fire Marshal to conduct a criminal investigation as to origin & cause, and subsequent prosecution related to federal or state statute.

**Arson Investigator (Sworn)** – certified by the State of Illinois as a **Peace Officer/Arson Investigator**; sworn by his/hers designated agency as a Sworn Peace Officer authorized by an ILEAS or MABAS agreement within the stricken agency jurisdiction and in conjunction with a law enforcement official from the jurisdiction having authority to conduct criminal investigations related to fire/arson; arson investigators may conduct interviews/interrogations and other assigned law enforcement duties.

**Sworn Arson Investigator/Juvenile Officer** – certified by the State of Illinois under the Illinois Juvenile Court Act of 1987 Chapter 405 ILCS 1-3. 17 Juvenile Police Officer authorized by (his/hers) law enforcement authority having jurisdiction to conduct criminal and non criminal investigations related to juveniles under the age of 17 years old at the time of the investigation. Juvenile Officers must be present during or conduct all interviews with investigative personnel involving any juveniles under the age of 17 at the time of the incident. The juvenile officer's primary responsibility is to protect the rights of the juvenile during questioning, to included subsequent criminal charges if deemed.

**Fire Investigator** – certified by the State of Illinois as a **Fire Investigator** assigned by his/her designated agency as a fire investigator to conduct origin and cause; fire investigators are limited to non - law enforcement duties to include scene examination, photos, sketching, collecting fire debris – evidence and conduct neighborhood canvas etc.

**Liaison Officer** – (1) **Law Enforcement Officer** and (1) **Fire Service Personnel** assigned by the stricken agency to the fire arson investigation; the liaison officer(s) will be responsible to coordination resources for his/hers specific agency, the Operation Officer, Safety Officer and the Fire/Arson investigators; Liaison officers must be authorized to assign additional law enforcement/fire personnel to assist in the investigation.

The stricken agency liaison officer(s) assigned to incident command/incident commander throughout the duration of the incident or replaced by the stricken agency as needed to ensure continuity of the command structure throughout the incident duration.

**Operations Officer** – **Task Force Deputy Commander** assigned to coordinate the origin and cause examination between incident command and the fire/arson investigators; provide available resources/logistics support to the fire/arson investigators to include but not limited to heavy equipment, man-power, tools, and food, water, and shelter/bathroom facilities.

**Safety Officer** – assigned to coordinate scene safety to include but not limited to scene entry, hazardous environments/materials, structural integrity, atmospheric monitoring, accessibility, support services, establish PPE for all fire and law enforcement personal assigned to origin and cause, De-con procedures and scene accountability.

**Support Personnel** – non investigative personnel to include but not limited to line fire fighters, police officers, ESDA, private contractors assigned to assist in the investigation utilized to assist in various non investigative duties to include but not limited to scene security, scene excavation, rescue/extinguishment, decontamination, command vehicle, shelter services etc.

**Available Resources**

**ESDA Resources** – ESDA emergency equipment resources include light trucks/towers, Incident command vehicles, patrol vehicles, personnel for scene security, American Red Cross, Canteen, and other resources as needed.

**Special Resource(s)** – Robinette Emergency Response Team - contact info Tom Stahr Office (630) 833-7997) Cell (630) 833-1722 an emergency response representative from Robinette will respond to evaluate the scene and equipments needs required to remove debris or assist in the origin and cause investigation. **(Robinette will not commit nor provide man-power or equipment until given authorization by the insurance carrier, owner or municipal authority guaranteeing payment for said services.)**

**Scene Security** – scene security is the responsibility of the jurisdiction having authority Police/Fire/ESDA or private security officers; the scene must be secured 24/7 during the course of the scene investigation. The scene maybe secured in any one or more of the following; on scene security officer, 8' fencing, police officer, fire fighter, ESDA personnel.

South Suburban Fire Investigation Task Force  
Policy and Procedure for Task Force Response

Reference Jurisdiction Authority

The following various Public Safety Acts granting authority as a matter of legislative determination in order to promote and protect the health, safety and welfare of the public, that it is necessary and in the public's interest to provide a system of combined mutual aid agreements and resources available to jurisdictions having authority to render mutual aid, assist in criminal and non investigations, providing man power and available resources to the stricken agency or community.

The following are the basic legislative foundation, structure and agreements utilized by the South Suburban Fire Investigation Task Force, Mutual Aid Box Alarm System and participating ILEAS agencies granting authority to those participating mutual aid agencies and responding personnel at the time of incident, request for assistance and during the subsequent fire/arson investigation related to the origin and cause of a fire or explosion.

1. Mutual Box Alarm System Agreement
2. 425 ILCS 25/ 6 through 17 Fire Investigation Act
3. ILCS Executive Branch 20 ILCS 2905 State Fire Marshal Act.
4. ILCS Executive Branch 20 ILCS Peace Officer Fire Investigation Act.
5. MABAS Divisions 15, 19, 22, 24 & 27 Mutual Aid Box Alarm Agreements.
6. South Suburban Fire investigation Task Force Policy/Procedure/Agreement.
7. South Suburban Fire Investigation Task Force Governing Board.
8. Office of the State Fire Marshal Division of Personnel & Standards.
9. ILEAS Law Enforcement Mutual Aid Agreements.
10. Illinois Juvenile Court Act of 1987 Act. 405/1-3.17

The following Response Policy is hereby adopted on this the 31<sup>st</sup> day of January, 2008 by the following Governing Board Members having authority to approved and adopt policy and standard operating procedures for the South Suburban Fire Investigators Task Force.

Signed \_\_\_\_\_  
Chief Kasper

Signed \_\_\_\_\_  
Chief Miller

Signed \_\_\_\_\_  
Chief Exner

Signed \_\_\_\_\_  
DC John Konopeck

Signed \_\_\_\_\_  
DC Cyborski

Signed \_\_\_\_\_  
Chief Bruce

Signed \_\_\_\_\_  
Chief Laveck

Signed \_\_\_\_\_  
Will County A/S/A Nicole Moore, Arson Unit

Signed \_\_\_\_\_  
Commander Bill Leddin

Signed \_\_\_\_\_  
Chief John Stratton

Signed \_\_\_\_\_  
DC Kevin Smith

Signed \_\_\_\_\_  
Chief Schofield

Signed \_\_\_\_\_  
Deputy Chief Special Prosecution Lacy

Signed \_\_\_\_\_  
Chief Rauch